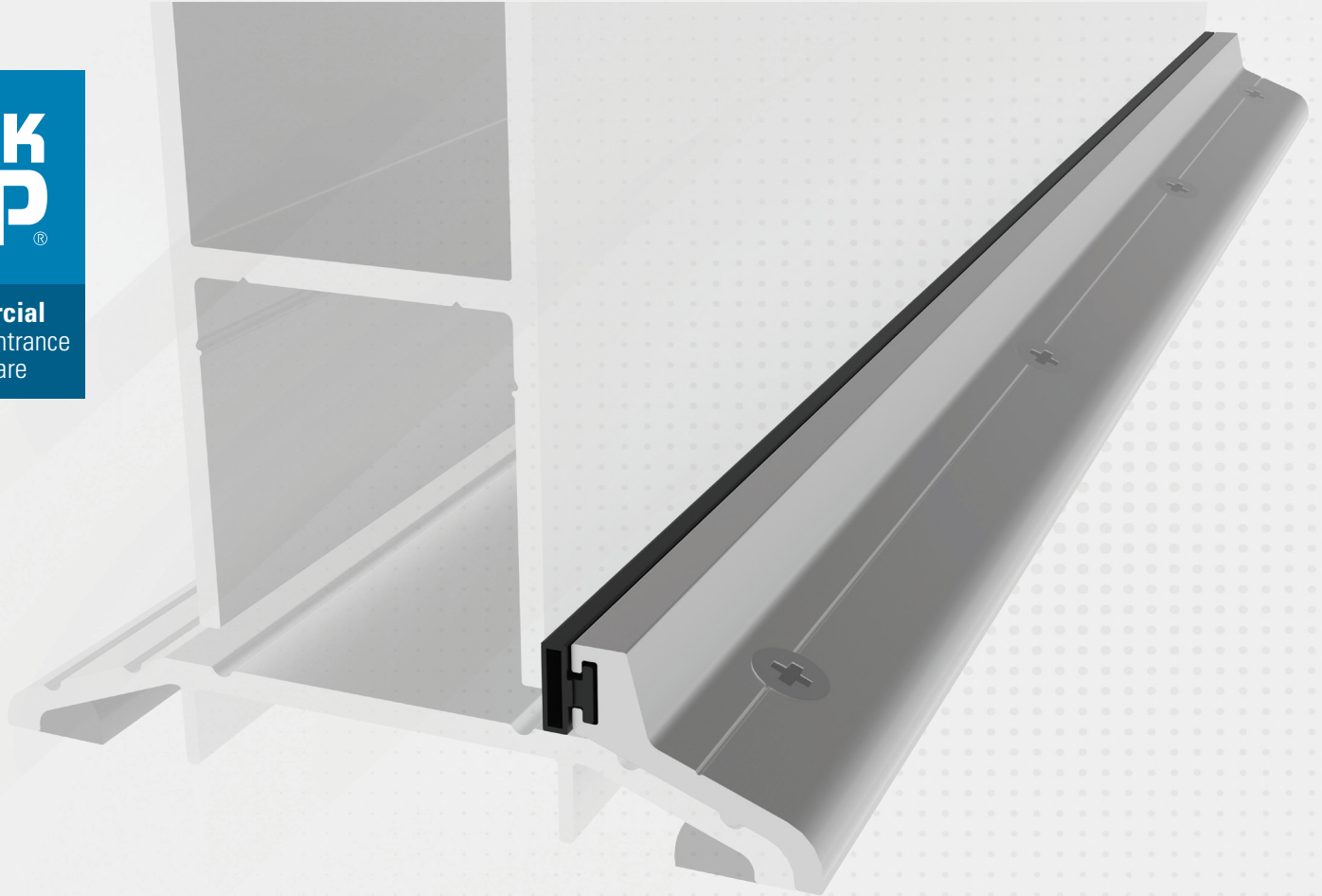


The logo for YKK AP, featuring the letters 'YKK' in a bold, sans-serif font above the letters 'AP' in a larger, bold, sans-serif font. A registered trademark symbol (®) is located to the right of the 'P'.

Commercial  
Standard Entrance  
Hardware



## Description

- Factory fabricated extruded aluminum. Surface applied stop and fastened to current threshold with gasket applied.
- Used with H-8100/8200 and 8300 Series Threshold.

**NOTE:** By adding the H-8000 Series to your threshold, the threshold is **not** ADA compliant.

## Compatible Entrances

All YKK AP Entrances

## Material Composition

Aluminum Extrusion with EPDM Gasket  
FC-1006 Flathead Screws not included with stop

## Finishes

Mill Finish

## Hardware Vendor

The logo for YKK AP, featuring the letters 'YKK' in a bold, sans-serif font above the letters 'AP' in a larger, bold, sans-serif font. A registered trademark symbol (®) is located to the right of the 'P'.

## Vendor Part or Series

H-8001: 3'-0" Length Single Non-Handed

H-8002: 3'-6" Length Single Non-Handed

H-8003: Up to 4'-0" Variable Single Non-Handed

H-8004: 6'-0" Pair Non-Handed

H-8005: Up to 8'-0" Variable Pair Non-Handed

# H-8000 Series

Standard Threshold Stop with Gasket